



**SECTION III. MONITORING PROGRAM**

A.	Provide a brief statement as to the status of monitoring plan implementation: There were no substantive changes made to the monitoring plan. Monthly samples are collected from the 34 watersheds for County-related business and also made available to the general public via the internet.
B.	Provide a brief discussion of the monitoring results to date. There are several mechanisms to evaluate water quality. This discussion centers around components of the Water Quality Index (WQI) such as nutrients, oxygen demanding compounds, water clarity, dissolved oxygen. It also takes into consideration loading. Both of the factors are primarily influenced by rainfall.
C.	Attach a monitoring data summary, as required by the permit. <b>Attached.</b>

**SECTION IV. FISCAL ANALYSIS**

A.	Total expenditures for the NPDES stormwater management program for the current reporting year: \$ 22,332,402.00
B.	Total budget for the NPDES stormwater management program for the subsequent reporting year: \$ 21,741,420.00

**SECTION V. MATERIALS TO BE SUBMITTED WITH THIS ANNUAL REPORT FORM**

Only the following materials are to be submitted to the Department along with this fully completed and signed Annual Report Form (check the appropriate box to indicate whether the item is attached or is not applicable):

<u>Attached</u>	<u>N/A</u>	
		Any additional information required to be submitted in this current annual reporting year in accordance with Part III.A of your permit that is not otherwise included in Section VII below.
	n/a	A monitoring data summary as directed in Section III.C above and in accordance with Rule 62-624.600(2)(c), F.A.C.
X		Year 1 ONLY: An inventory of all known major outfalls and a map depicting the location of the major outfalls (hard copy or CD-ROM) in accordance with Rule 62-624.600(2)(a), F.A.C.
	n/a	Year 3 ONLY: The estimates of pollutant loadings and event mean concentrations for each major outfall or each major watershed in accordance with Rule 62-624.600(2)(b), F.A.C.
	n/a	Year 4 ONLY: Permit re-application information in accordance with Rule 62-624.420(2), F.A.C.

**DO NOT SUBMIT ANY OTHER MATERIALS**  
(such as records and logs of activities, monitoring raw data, public outreach materials, etc.)

**SECTION VI. CERTIFICATION STATEMENT AND SIGNATURE**

The Responsible Authority listed in Section I.F above must sign the following certification statement, as per Rule 62-620.305, F.A.C.:

I certify under penalty of law that this document and all attachments were prepared under my direction or supervision in accordance with a system designed to assure that qualified personnel properly gathered and evaluated the information submitted. Based upon my inquiry of the person or persons who manage the system, or those persons directly responsible for gathering the information, the information submitted is, to the best of my knowledge and belief, true, accurate and complete. I am aware that there are significant penalties for submitting false information, including the possibility of fine and imprisonment for knowing violations.

Name of Responsible Authority (type or print): Jim Lavender

Title: Public Works Director

Signature:  Date: 8/31/10

**SECTION VII. STORMWATER MANAGEMENT PROGRAM (SWMP) SUMMARY TABLE**

A.	B.	C.	D.	E.	F.	
Permit Citation/S WMP Element	Permit Requirement/Quantifiable SWMP Activity	Number of Activities Performed	Documentation/ Record	Entity Performing the Activity	Comments	
Part III.A.1	Structural Controls and Stormwater Collection Systems Operation					
	Maintain an up-to-date inventory of stormwater facilities operated by the permittee. Provide any updates to the inventory in the subsequent ANNUAL REPORT.					
	<b>Dry retention ponds</b>	0		Lee Co Department of Transportation, Operations, <a href="mailto:Wsimmons@leegov.com">Wsimmons@leegov.com</a> , (LDOT)	LDOT reports none.	
	<b>Wet retention ponds</b>	106	SDE_RO.DOT.Ponds	LDOT		
	<b>Channels/canals (miles)</b>	163	SDE_RO.DOT.Drainage Flow_Ways	LDOT		
	<b>Ditches/swales (miles)</b>	9,830	SDE_RO.DOT.Road Centerline	LDOT	(Road length x 2) – Curb Inv (401)	
	<b>Inlets/catch basins/grates</b>	9,796	SDE_RO.DOT.Drainage Structure	LDOT		
	<b>Pollution control structures</b>	11	SDE_RO.DOT.Drainage Structure	LDOT		
	<b>Weirs</b>	21	SDE_RO.DOT.Drainage Structure	LDOT		
		Conduct inspections and maintenance of structural controls and roadway stormwater collection structures in accordance with Table II.A.1.a of the permit. Maintain an internal record keeping system to schedule and document inspections and maintenance activities performed on structural controls and roadway stormwater collection structures operated by the permittee. Report on the inspections and maintenance conducted in each ANNUAL REPORT.				
		<b>Dry retention pond inspections</b>	0			No dry retention ponds
<b>Dry retention pond maintenance</b>		0				
<b>Wet retention pond inspections</b>		106	Division of Mowing Areas Map/SOP 3/9-3/10	LDOT		
<b>Wet retention pond</b>		106	Division of Mowing Areas Map/SOP 3/9-3/10	LDOT		

**SECTION VII. STORMWATER MANAGEMENT PROGRAM (SWMP) SUMMARY TABLE**

A.	B.	C.	D.	E.	F.
Permit Citation/S WMP Element	Permit Requirement/Quantifiable SWMP Activity	Number of Activities Performed	Documentation/ Record	Entity Performing the Activity	Comments
	<b>maintenance</b>				
	<b>Channel/canal inspections (miles)</b>	163	Division of Mowing Areas Map/SOP 3/9-3/10	LDOT	
	<b>Channel/canal maintenance (miles/ acres)</b>	356	Production with earned Hours (PEH) Work order Section 50(405,410,415,420,425)	LDOT	
	<b>Ditch/swale inspections (miles)</b>	94			
	<b>Ditch/swale maintenance (miles)</b>	52,894	PEH Work order Section 17, 30 (122, 179,183)	LDOT	
	<b>Ditch/swale maintenance (miles)</b>	52,894	PEH Work order Section 17, 30 (122, 179,183)	LDOT	
	<b>Inlet/catch basin/grate inspections</b>	9,796	Division of Mowing Areas Map/SOP 3/9-3/10	LDOT	
	<b>Inlet/catch basin/grate maintenance</b>	2,083	PEH Work order Section 39,41 (340, 345,300,304,306)	LDOT	
	<b>Pollution control structure inspections</b>	11	Division of Mowing Areas Map/SOP 3/9-3/10	LDOT	
	<b>Pollution control structure maintenance</b>	11	Division of Mowing Areas Map/SOP 3/9-3/10	LDOT	
	<b>Weir inspections</b>	236	PEH Work order Section 55 (440, 444)	LDOT	
	<b>Weir maintenance</b>	215	PEH Work order Section 55 (444)	LDOT	
	<b>Pipe cleaning/clearing (miles)</b>	11	PEH Work order Section 41 (302)	LDOT	
Part III.A.2	Areas of New Development and Significant Redevelopment				
	During Years 1 and 2, conduct a review of the permittee's current local codes and land development regulations to determine where changes can be made to reduce the stormwater impact of new development. In particular, focus on changes to the code that will promote: reductions in impervious surfaces, the use of swales, the incorporation of low impact development principles, stormwater reuse, and adherence to the principles of the Florida Yards and Neighborhoods program in new landscaping. Provide a				

**SECTION VII. STORMWATER MANAGEMENT PROGRAM (SWMP) SUMMARY TABLE**

A.	B.	C.	D.	E.	F.
Permit Citation/S WMP Element	Permit Requirement/Quantifiable SWMP Activity	Number of Activities Performed	Documentation/ Record	Entity Performing the Activity	Comments
	summary of recommended changes to the local codes and regulations with a schedule for implementation in the Year 3 ANNUAL REPORT. <b>(Year 3 Only: Attach summary of recommended changes)</b>				
Part III.A.3	Roadways				
	Continue to implement the litter control programs for public highways and streets, including rights-of-way, employed within the permittee's jurisdictional area and properly dispose of collected material. Report on the litter collection activities, including the frequency of litter collection and an estimate of the quantity of litter collected, in each ANNUAL REPORT. <b>Number of litter collections</b> <b>Amount of litter collected -bags tons</b> <b>Total miles of right-of-way maintained</b>	255 1,913 2,293 2,595	Adrienne Solomon <a href="mailto:solomoaw@leegov.com">solomoaw@leegov.com</a> "NPDES Annual Reporting" 4/29/10 e-mail Adrienne Solomon <a href="mailto:solomoaw@leegov.com">solomoaw@leegov.com</a> <a href="#">Adopt-A-Road.pdf</a> AND PEH Work Order Section 14 (112, 114) GIS\SDE.DOT.Road Centerline	LDOT, Volunteers LDOT, Volunteers LDOT	Adopt-A-Road Bags = Adopt-A-Road Tons = LDOT
	Continue to implement standard practices employed to reduce the pollutants in stormwater runoff from areas associated with road repair and maintenance, and from permittee-owned or operated equipment yards and maintenance shops that support road maintenance activities. <b>Applicable municipal equipment yards and maintenance shops</b> <b>Frequency or number of</b>	1 Yearly	Year 6 Municipal Maintenance Yard Inspection, S:\NPDES\Facility Sites\Lee County Municipal\Equipment-Maintenance Yards Year 5 Municipal Maintenance Yard Inspection	Division of Natural Resources (DNR), Simmons, <a href="mailto:lsimmons@leegov.com">lsimmons@leegov.com</a> DNR, Simmons	LDOT Operations

**SECTION VII. STORMWATER MANAGEMENT PROGRAM (SWMP) SUMMARY TABLE**

A.	B.	C.	D.	E.	F.
Permit Citation/S WMP Element	Permit Requirement/Quantifiable SWMP Activity	Number of Activities Performed	Documentation/ Record	Entity Performing the Activity	Comments
	<p style="text-align: center;"><b>inspections</b></p> <p>Continue to maintain the Lee County Department of Transportation (LDOT) 24-hour Request for Action (RFA) service for public reporting of roadway and drainage problems.</p> <p><b>Number of Requests for Action (RFAs) reported</b></p> <p><b>Number of RFAs resolved</b></p> <p>Continue to actively promote and coordinate, on a regular basis, public participation in the "Keep Lee County Beautiful, Inc." litter control program.</p> <p><b>Amount of litter collected (tons)</b></p> <p><b>Total miles cleaned (per year)</b></p>	<p></p> <p>401</p> <p>386</p> <p>50</p> <p>82</p>	<p></p> <p>Intranet2/dotrfa/rfa_results.asp</p> <p>Intranet2/dotrfa/rfa_results.asp</p> <p>Rudy Busch, <a href="mailto:Klcb32@cs.com">Klcb32@cs.com</a> Program Director "NPDES Annual Reporting" e-mail 5/27/10</p> <p>Rudy Busch, <a href="mailto:Klcb32@cs.com">Klcb32@cs.com</a> Program Director "NPDES Annual Reporting" e-mail 5/27/10</p>	<p></p> <p>LDOT Operations</p> <p>LDOT Operations</p> <p>Volunteers</p> <p>Volunteers</p>	<p></p> <p>Vactor, ditch &amp; canal RFAs</p> <p></p> <p></p> <p></p>
Part III.A.4	Flood Control Projects				
	<p>Maintain a list of stormwater capital improvement projects proposed by the Stormwater Management Master Plan. Report on the status of the projects, including a description of the stormwater quality improvement and/or protection measures for each project, in each ANNUAL REPORT. Include only those projects with activity during the reporting year.</p>				

**SECTION VII. STORMWATER MANAGEMENT PROGRAM (SWMP) SUMMARY TABLE**

A.	B.	C.	D.	E.	F.
Permit Citation/S WMP Element	Permit Requirement/Quantifiable SWMP Activity	Number of Activities Performed	Documentation/ Record	Entity Performing the Activity	Comments
	<p><b>Capital Improvement Projects (CIPs) proposed</b></p> <p><b>CIPs active</b></p> <p><b>CIPs completed</b></p> <p>(Attach description of stormwater quality improvements/protection measures for each project)</p>	6	"s:\NPDES\ANNUAL\Annual2, Year 6, 3-09 to 3-10\AR Documents\CIP\CIP Projects YR 09-10.xls"	DNR, Anura Karuna-Muni – akaruna: muni@leegov.com, Wanda Wooten: wootenws@leegov.com , Elin Clemons: clemonem@leegov.com	
		11	"s:\NPDES\ANNUAL\Annual2, Year 6, 3-09 to 3-10\AR Documents\CIP\CIP Projects YR 09-10.xls"	Individual contractors hired by DNR	
		23	"s:\NPDES\ANNUAL\Annual2, Year 6, 3-09 to 3-10\AR Documents\CIP\CIP Projects YR 09-10.xls"	Individual contractors hired by DNR	
Part III.A.5	Municipal Waste Treatment, Storage, and Disposal Facilities Not Covered by an NPDES Stormwater Permit				
	<p>Continue the program to identify priorities and procedures for inspections, and implementation of measures to control discharges from municipal waste treatment, waste storage, and waste disposal facilities, including transfer stations and waste fleet maintenance facilities that are not otherwise covered by an NPDES stormwater permit. The program shall identify priority facilities and shall determine the necessary control measures and procedures to be employed at each facility. Report on the status and findings of the program, including the number and frequency of the inspections conducted, and the identification of the applicable facilities, in each ANNUAL REPORT</p> <p><b>Applicable municipal facilities</b></p> <p><b>Number of inspections</b></p>				
		7	S:\NPDES\Facility Sites\Lee County Municipal\Non-permitted Municipal Storage, Lee County - Annual Insp\Permit 2 Yr 6 Storage Yards	DNR, Simmons	Alva Barn, Lehigh Depot, Polishing Ponds, Utilities Yard, Buckingham Dump, Orchid Dump, Ten Mile Dump
		7	S:\NPDES\Facility Sites\Lee County Municipal\Non-	DNR, Simmons	

**SECTION VII. STORMWATER MANAGEMENT PROGRAM (SWMP) SUMMARY TABLE**

A.	B.	C.	D.	E.	F.
Permit Citation/S WMP Element	Permit Requirement/Quantifiable SWMP Activity	Number of Activities Performed	Documentation/ Record	Entity Performing the Activity	Comments
	Frequency of inspections		permitted Municipal Storage, Lee County - Annual Insp\Permit 2 Yr 6 Storage Yards		
		Yearly	S:\NPDES\Facility Sites\Lee County Municipal\Non-permitted Municipal Storage, Lee County - Annual Insp\Permit 2 Yr 6 Storage Yards	DNR, Simmons	
Part III.A.6	Pesticides, Herbicides, and Fertilizer Application				
	Continue to require documentation of proper certification and licensing for all applicators contracted to apply pesticides or herbicides on permittee-owned property, as well as any permittee personnel employed in the application of these products, in accordance with Florida Department of Agriculture regulations.				
	<b>Certified/licensed applicators (personnel)</b>	12	Adrienne Solomon <a href="mailto:solomoaw@leegov.com">solomoaw@leegov.com</a> NPDES Annual Reporting 4/29/10 e-mail	LDOT	
	<b>Certified/licensed applicators (contractors)</b>	18	Diana Khan, Lee County Purchasing 344-5450 'Pesticide Application Licenses.xls'	Amer-Tech Inc., P&T Lawn & Tractor, Valley Crest, Landscape Dimensions, Tropic Lawns, Greenwerx, Excavation Etc., Pro Cut Lawn, Superior Landscaping, Vila & Son, Beautiful Boundaries, Allstate Property Services	Licenses were verified at <a href="http://www.flaes.org">www.flaes.org</a> (FL Dept of Agriculture and Consumer Services website)
	Continue to implement a public education program (using such means as the Internet, literature, lectures, special events, notices on Government Access television, radio announcements, utility bill inserts, bulletin board ads, etc) to encourage citizens to reduce their use of pesticides, herbicides, and fertilizers. Continue the distribution of public education materials describing the need to minimize the application of fertilizers, pesticides and herbicides, and promote actions such as incorporating native vegetation and xeriscape concepts				

**SECTION VII. STORMWATER MANAGEMENT PROGRAM (SWMP) SUMMARY TABLE**

A.	B.	C.	D.	E.	F.
Permit Citation/S WMP Element	Permit Requirement/Quantifiable SWMP Activity	Number of Activities Performed	Documentation/ Record	Entity Performing the Activity	Comments
	<p>into new landscaping projects. Report on the public education activities that occurred within the permittee's jurisdiction, such as the number of brochures/bill inserts distributed, the number of newspaper articles published, and the number of public presentations conducted, in each ANNUAL REPORT.</p>				
	<p><b>Brochures/Flyers/Fact sheets distributed</b></p>	132,547	<p>Tom Becker <a href="mailto:tbecker@leegov.com">tbecker@leegov.com</a> email "RE: NPDES Annual Report March '09 – March '10/Part III.A.6" 6/10/10, Elin Clemons <a href="mailto:clemonem@leegov.com">clemonem@leegov.com</a> Fertilizer Ord. Brochures – email 7/13/10</p>	Florida Yards and Neighbors (FY&N), Lee County DNR	Lee County Fertilizer Ordinance brochures
	<p><b>Public displays</b></p>	76	<p>Tom Becker <a href="mailto:tbecker@leegov.com">tbecker@leegov.com</a> email "RE: NPDES Annual Report March '09 – March '10/Part III.A.6" 6/10/10</p>	FY&N	
	<p><b>Special events</b></p>	164	<p>Tom Becker <a href="mailto:tbecker@leegov.com">tbecker@leegov.com</a> email "RE: NPDES Annual Report March '09 – March '10/Part III.A.6" 6/10/10 "Group Events"</p>	FY&N	
	<p><b>Website hits</b></p>	41,418	<p>Tom Becker <a href="mailto:tbecker@leegov.com">tbecker@leegov.com</a> email "RE: NPDES Annual Report March '09 – March '10/Part III.A.6" 6/10/10</p>	FY&N	
	<p>Continue to conduct annual seminars, training sessions, and/or on-the-job supervision for municipal applicators to emphasize the stormwater implications of pesticides and herbicide application. Report on the training activities, including the number of training sessions conducted and the number of municipal applicators trained, in each ANNUAL REPORT.</p>				
	<p><b>Training sessions conducted</b></p>	8	<p>Adrienne Solomon <a href="mailto:solomoaw@leegov.com">solomoaw@leegov.com</a> Pesticide History Lee County.pdf</p>	LDOT	
	<p><b>Municipal applicators trained</b></p>	6	<p>Adrienne Solomon <a href="mailto:solomoaw@leegov.com">solomoaw@leegov.com</a> Pesticide History Lee County.pdf</p>	LDOT	
Part III.A.7.a	Illicit Discharges and Improper Disposal — Inspections, Ordinances, and Enforcement Measures				
	<b>No Reportable Items</b>				

**SECTION VII. STORMWATER MANAGEMENT PROGRAM (SWMP) SUMMARY TABLE**

A.	B.	C.	D.	E.	F.
Permit Citation/S WMP Element	Permit Requirement/Quantifiable SWMP Activity	Number of Activities Performed	Documentation/ Record	Entity Performing the Activity	Comments
Part III.A.7.c	Illicit Discharges and Improper Disposal — Investigation of Suspected Illicit Discharges and/or Improper Disposal				
	Continue to implement the standard investigative procedures (including pro-active inspections) to identify and terminate the source(s) of illicit connections or discharges to the MS4. Based upon reports received from personnel or citizens, investigate suspected illicit discharges. Maintain an internal log documenting the reports of suspected illicit discharges, investigations performed, and enforcement actions taken. Report on the program, including the number and the results of the investigations and enforcement actions conducted, in each ANNUAL REPORT.				
	<b>Pro-active inspections of suspected illicit connections/discharges/dumping</b>	158	S:\NPDES\Facility Sites\Fac_Insp.MDB	DNR, Simmons, Aliucci	
	<b>Investigations of reports of suspected illicit connections/discharges/dumping</b>	20	Intranet2/dotrfa/rfa_results.asp	DNR, Simmons, Aliucci	
	<b>Illicit connections/discharges/dumping found</b>	46	Intranet2/dotrfa/rfa_results.asp	DNR, Simmons, Aliucci	28 from Pro-active Insp
	<b>Citations (warnings) issued</b>	9		DNR, Simmons, Aliucci	Citations 000355, 000356, 000357,000358, 000378, 000397, 000361, 000367, 000383
	<b>Tickets (fines) issued</b>	3		DNR, Simmons, Aliucci	Citations 000359, 000381, 000382

**SECTION VII. STORMWATER MANAGEMENT PROGRAM (SWMP) SUMMARY TABLE**

A.	B.	C.	D.	E.	F.
Permit Citation/S WMP Element	Permit Requirement/Quantifiable SWMP Activity	Number of Activities Performed	Documentation/ Record	Entity Performing the Activity	Comments
	<p>Continue to implement a periodic training course to educate appropriate permittee personnel to identify and report conditions in the stormwater facilities that may indicate the presence of illicit discharges to the MS4. Report on the training activities, including the number of training courses conducted and the number of personnel trained, in each ANNUAL REPORT.</p> <p><b>Training sessions conducted</b></p> <p><b>Personnel trained</b></p>	<p></p> <p>4</p> <p>24</p>	<p></p> <p>Illicit Discharge Identification Class Sign-In Sheets</p> <p>Illicit Discharge Identification Class Sign-In Sheets</p>	<p></p> <p>DNR, Pellicer, Simmons, Aliucci</p> <p>DNR, Pellicer, Simmons, Aliucci</p>	<p></p> <p></p> <p></p>
Part III.A.7.d	Illicit Discharges and Improper Disposal — Spill Prevention and Response				
	<p>Continue to implement the spill-prevention/spill-response plan and procedures to prevent, contain, and respond to spills that may discharge into the MS4. Ensure that spills, regardless of whether they are hazardous, are properly addressed. Report on the spill prevention and response activities, including the number of spills addressed, in each ANNUAL REPORT.</p> <p><b>Hazardous and non-hazardous material spills responded to</b></p> <p><b>Citations (warnings) issued</b></p> <p><b>Tickets (fines) issued</b></p> <p><b>Enforcement referrals to DEP/agency</b></p>	<p></p> <p>89</p> <p>0</p> <p>0</p> <p>2</p>	<p></p> <p>Unincorporated Lee County Fire Departments, Lee County Emergency Management, Port Authority emails/Faxes—(Compiled in s:\NPDES\ANNUAL\Annual2, Year 6, 3-09 to 3-10\AR Documents\Fireaddress tally march 09 to 10.xls)</p> <p></p> <p>Unincorporated Lee County Fire Departments, Lee County Emergency Management, Port Authority</p>	<p></p> <p>Individual Local Fire Departments</p> <p></p> <p>Individual Local Fire Departments</p>	<p></p> <p></p> <p></p> <p></p>

**SECTION VII. STORMWATER MANAGEMENT PROGRAM (SWMP) SUMMARY TABLE**

A.	B.	C.	D.	E.	F.
Permit Citation/S WMP Element	Permit Requirement/Quantifiable SWMP Activity	Number of Activities Performed	Documentation/ Record	Entity Performing the Activity	Comments
	<p>Provide periodic training courses on proper spill prevention, containment, and response techniques and procedures for appropriate permittee personnel. Report on the training activities completed, including the number of training courses provided and the number of personnel trained, in each ANNUAL REPORT.</p> <p><b>Training courses provided</b></p> <p><b>Personnel trained</b></p>	<p></p> <p>2</p> <p>49</p>	<p>emails/Faxes—(Compiled in s:\NPDES\ANNUAL\Annual2, Year 6, 3-09 to 3-10\AR Documents\Fireaddress tally march 09 to 10.xls)</p> <p>Sign-in Sheets, All-Pro Occupational Trainers, 813-662-0986, allprojmb@msn.com</p> <p>Sign-in Sheets, All-Pro Occupational Trainers, 813-662-0986, allprojmb@msn.com</p>	<p></p> <p>Dan Buechner, All-Pro Occupational Trainers</p> <p>Dan Buechner, All-Pro Occupational Trainers</p>	<p></p> <p>40-hour class and 8-hour refresher</p>
Part III.A.7.e	Illicit Discharges and Improper Disposal — Public Reporting				
	<p>Continue to maintain a complaint log documenting all reports of illicit discharges and improper disposal and the actions taken to investigate and resolve the problem in the permittee's jurisdictional area. Report the number and type of complaints received and the results of the investigations (i.e., whether an illicit discharge was found and subsequently eliminated) in each ANNUAL REPORT.</p> <p><b>Citizen reports of suspected illicit connections/discharges/dumping received</b></p>	<p></p> <p>20</p>	<p></p> <p>Intranet2/dotrfa/rfa_results.asp</p>	<p></p> <p>DNR, Simmons, Aliucci</p>	<p></p>

**SECTION VII. STORMWATER MANAGEMENT PROGRAM (SWMP) SUMMARY TABLE**

A.	B.	C.	D.	E.	F.
Permit Citation/S WMP Element	Permit Requirement/Quantifiable SWMP Activity	Number of Activities Performed	Documentation/ Record	Entity Performing the Activity	Comments
	Illicit connections/discharges/dumping found	18	Intranet2/dotrfa/rfa_results.asp	DNR, Simmons, Aliucci	
	Illicit connections/discharges/dumping eliminated	18	Intranet2/dotrfa/rfa_results.asp	DNR, Simmons, Aliucci	
	<p>Continue to promote, publicize, and facilitate public reporting of the presence of illicit discharges and improper disposal of materials into the MS4. Continue to maintain a dedicated phone line for reporting of suspected illicit discharges and improper disposal. The permittee shall publicize the existence of this number on a routine basis and shall include information on the problems associated with illicit discharges and improper disposal, how to identify them, and how to report incidents found. Report on the public outreach activities conducted in each ANNUAL REPORT.</p>				
	Brochures/Flyers/Fact sheets/ rain gauges distributed	244	NPDES Calendar Notes	DNR, Simmons, Aliucci	
	Public displays	2	NPDES Calendar Notes	DNR, Simmons, Aliucci	Calusa Blueway Festival
	Seminars/Workshops	23	S:\NPDES\ANNUAL\Annual2, Year 6, 3-09 to 3-10\AR Documents\Special Events\School P2 Presentations.xls	DNR, P2, Becky Alexander, Ralexander@leegov.com	Elementary School Presentations
	Special events	0			
	Website hits	890	Website Counter <a href="http://www.lee-county.com/NPDES">www.lee-county.com/NPDES</a>	DNR	
Part III.A.7.f	Illicit Discharges and Improper Disposal — Oils, Toxics, and Household Hazardous Waste Control				
	Continue implementation of the outreach program to instruct the public on responsible environmental management and the proper disposal of used				

**SECTION VII. STORMWATER MANAGEMENT PROGRAM (SWMP) SUMMARY TABLE**

A.	B.	C.	D.	E.	F.
Permit Citation/S WMP Element	Permit Requirement/Quantifiable SWMP Activity	Number of Activities Performed	Documentation/ Record	Entity Performing the Activity	Comments
	<p>motor oil, leftover hazardous household products, and lead acid batteries. The outreach program could include an activity such as the stenciling/marketing of municipally-owned storm sewer inlets, and providing information through the Internet, utility bill inserts, brochures, flyers, PSAs, presentations, etc. Continue to support and publicize Household Hazardous Waste Collection Days and Conditionally Exempt Business Collection Days to facilitate proper disposal of oil, toxics, and household hazardous materials. Lee County shall provide the other permittees with adequate advance notification of these planned events. Report on the public outreach activities conducted in each ANNUAL REPORT</p>				
	<p><b>Brochures/Flyers/Fact sheets distributed</b></p>	16,837	<p>Solid Waste Billing invoices (Fiscal, Rosi 533-8541); Bridgette Kantor, 533-8000, e-mail "RE: 2009 Household Chemical Waste Program Solid Waste Expenses" 4/27/10; Dale Nottingham P2 e-mail "RE: Cost of education" 5/27/10</p>	P2 , LC Solid Waste	
	<p><b>Direct mailings</b></p>	151,000	<p>Gulf Coast Printing Invoice 11/30/09 and 12/20/09; LC Fiscal, Rosi 533-8541</p>	LC Solid Waste	Reduce, Reuse, Recycle Calendar
	<p><b>Newspaper and newsletter articles/notices</b></p>	51	<p>News-Press, Florida Weekly, Southwest Florida Business and Breeze Newspapers Invoices (Fiscal, Rosi 533-8541)</p>	LC Solid Waste	Number notices, not circulation
	<p><b>Newsletters distributed</b></p>	0			Discontinued newsletter due to budget constraints
	<p><b>Number of Household Hazardous Waste Collection Day events</b></p>	260	<p>Brigitte Kantor kantorbx@leegov.com "RE: 2009 Household Chemical Waste Program Solid Waste Expenses" e-mail 4/27/10</p>	Lee County Solid Waste	Days open in permanent facility. Mon – Fri and every first Sat. of the month
	<p><b>Public displays</b></p>	10	<p>P2 Jayne Coles <a href="mailto:jcoles@leegov.com">jcoles@leegov.com</a> "2010 SW Florida Fair Schedule" letter and Jayne Coles email "RE: Cost of Education"</p>	Lee County Pollution Prevention, Jayne Coles, <a href="mailto:jcoles@leegov.com">jcoles@leegov.com</a>	Lee County Fair 2/26/10 – 3/7/10
	<p><b>Radio or television Public</b></p>	0		Lee County Solid Waste	No radio or television

**SECTION VII. STORMWATER MANAGEMENT PROGRAM (SWMP) SUMMARY TABLE**

A.	B.	C.	D.	E.	F.
Permit Citation/S WMP Element	Permit Requirement/Quantifiable SWMP Activity	Number of Activities Performed	Documentation/ Record	Entity Performing the Activity	Comments
	<b>Service Announcements (PSAs)</b>				announcements were reported
	<b>Special events</b>	2	Solid Waste Billing , Fiscal, Rosi 533-8541, Brigitte Kantor kantorbx@leegov.com "2009 Household Chemical Waste Program Solid Waste Expenses" e-mail	Lee County Solid Waste	Household Chemical Wastes Events, Sponsored by LC Solid Waste
	<b>Storm sewer inlets marked</b>	66	s:\NPDES\ANNUAL\Annual2, Year 6, 3-09 to 3-10\AR Documents\GIS exports 2009-2010\Markedinlets.xls	DNR, Simmons, Aliucci	
Part III.A.7.g	Illicit Discharges and Improper Disposal — Limitation of Sanitary Sewer Seepage				
	Continue to implement procedures to reduce or eliminate discharges to the MS4 from sanitary sewer seepage and sanitary sewer overflows (SSOs). Report on the activities to reduce or eliminate seepage and SSOs, such as number of incidents discovered and resolved, in each ANNUAL REPORT.				
	<b>Sanitary sewer seepage incidents discovered</b>	0			
	<b>Sanitary sewer seepage incidents resolved</b>	0			
	<b>Sanitary sewer overflows (SSOs) discovered</b>	25	North Fort Myers Utilities, Abnormal Event Reports, Troy Kepley 239-340-3737 tkepley@woodardcurran.com ; Lee County Utilities Abnormal Event Report, Michael Currier, mcurrier@leegov.com	North Ft Myers Utilities, LC Utilities	
Part III.A.8.a	Industrial and High-Risk Runoff — Identification of Priorities and Procedures for Inspections				
	Continue to maintain an up-to-date inventory of all existing high risk facilities discharging into the permittee's MS4. The inventory shall identify the outfall and surface waterbody into which each high risk facility discharges.				
	<b>Total high risk facilities</b>	9	S:\NPDES\Facility Sites	DNR, Simmons, Aliucci	

**SECTION VII. STORMWATER MANAGEMENT PROGRAM (SWMP) SUMMARY TABLE**

A.	B.	C.	D.	E.	F.
Permit Citation/S WMP Element	Permit Requirement/Quantifiable SWMP Activity	Number of Activities Performed	Documentation/ Record	Entity Performing the Activity	Comments
	<p><b>New high risk facilities</b></p> <p>Continue the inspection program procedures for high risk facilities, according to the priority and established inspection schedules, to determine compliance with all appropriate aspects of the stormwater program (e.g., no illicit connections and compliance with local stormwater regulation requirements). Maintain a log documenting the inspections performed and enforcement actions taken. Report on the inspection program, including the number and results of inspections conducted and enforcement actions taken, in each ANNUAL REPORT.</p> <p><b>High risk facility inspections Citations (warnings) issued</b></p> <p><b>Tickets (fines) issued</b></p>	<p>1</p> <p>9</p> <p>0</p> <p>0</p>	<p>S:\NPDES\Facility Sites</p> <p>S:\NPDES\Facility Sites</p>	<p>DNR, Simmons</p> <p>DNR, Simmons, Aliucci</p>	<p>Best Price Auto "The Junk King"</p>
Part III.A.8.b	Industrial and High-Risk Runoff — Monitoring for High Risk Industries				
	<p>Monitoring may be required on an as-needed basis in the event that inspections of high-risk facilities disclose suspected illicit discharges to the MS4. New high-risk industrial facilities as defined in 40 CFR 122.26(d)(2)(iv)(C) must be evaluated to determine if the new discharge is contributing a substantial pollutant load to the MS4. The evaluation may include site-specific monitoring.</p> <p><b>New high risk facilities evaluated</b></p> <p><b>High risk facilities monitored</b></p>	<p>1</p> <p>1</p>	<p>S:\NPDES\Facility Sites</p> <p>S:\NPDES\Facility Sites\Lee County Municipal\Lee Hendry Landfill</p>	<p>DNR, Simmons</p> <p>DNR</p>	<p>Best Price Auto "The Junk King"</p> <p>Lee/Hendry landfill</p>

**SECTION VII. STORMWATER MANAGEMENT PROGRAM (SWMP) SUMMARY TABLE**

A.	B.	C.	D.	E.	F.
Permit Citation/S WMP Element	Permit Requirement/Quantifiable SWMP Activity	Number of Activities Performed	Documentation/ Record	Entity Performing the Activity	Comments
Part III.A.9.a	Construction Site Runoff — Site Planning and Non-Structural and Structural Best Management Practices				
	Continue to implement the local codes or land development regulations that require construction site planning approval and structural and non-structural erosion and sediment controls during construction to reduce the discharge of pollutants to the MS4.				
	<b>Construction site plan reviews (private and municipal sites)</b>	35	Lee County Development Review Services Report, Development Review Applications Received	DNR, Simmons, Aliucci	
Part III.A.9.b	Construction Site Runoff — Inspection and Enforcement				
	Continue to implement the inspection program for construction projects to ensure compliance with local stormwater requirements and the permittee's development requirements concerning erosion and sediment control. Maintain enforcement of inspection program by issuing a violation notice and/or a stop work order to those construction site operators that repeatedly do not maintain compliance with the approved erosion and sediment control BMPs and permit conditions. Maintain an internal log documenting the inspections performed and any enforcement actions taken. Report on the inspection program, including the number of construction inspections conducted and the number and type of enforcement actions taken, in each ANNUAL REPORT.				
	<b>Construction site inspections</b>	2543	Access Query "All Const Inspections Year 6"	DNR, Simmons, Aliucci	

**SECTION VII. STORMWATER MANAGEMENT PROGRAM (SWMP) SUMMARY TABLE**

A.	B.	C.	D.	E.	F.
Permit Citation/S WMP Element	Permit Requirement/Quantifiable SWMP Activity	Number of Activities Performed	Documentation/ Record	Entity Performing the Activity	Comments
	<b>(private and municipal sites) Citations (warnings) issued</b>	9	S:\NPDES\ANNUAL\Annual2, Year 6, 3-09 to 3-10\AR Documents\GIS exports 2009-2010	DNR, Simmons, Aliucci	
	<b>Stop Work Orders issued</b>	1	S:\NPDES\ANNUAL\Annual2, Year 6, 3-09 to 3-10\AR Documents\GIS exports 2009-2010	DNR, Simmons	
	<b>Tickets (fines) issued</b>	17	S:\NPDES\ANNUAL\Annual2, Year 6, 3-09 to 3-10\AR Documents\GIS exports 2009-2010	DNR, Simmons, Aliucci	
	Develop and implement a formalized construction inspection checklist covering current stormwater management and water quality inspection items in order to standardize the inspection process. Provide a copy of the developed checklist in the Year 1 ANNUAL REPORT. <b>(Year 1 Only: Attach inspection checklist)</b>				
Part III.A.9.c	Construction Site Runoff — Site Operator Training				
	Continue the stormwater training/outreach program for construction site operators and inspectors. Provide periodic training courses for public and private persons involved in the construction or inspection of stormwater management, erosion and sediment controls. Report on the training activities, including the number of training courses provided and the number of personnel trained, in each ANNUAL REPORT. <b>Training courses provided</b>	4	FDEP Class Flyers & Sign-in Sheets, Applied Polymer Class Sign-in Sheet	DNR, Pellicer, Simmons, Aliucci	
	<b>Private participants trained</b>	88	FDEP Class Flyers & Sign-in Sheets, Applied Polymer Class Sign-in Sheet	DNR, Pellicer, Simmons, Aliucci	
	<b>Municipal construction inspectors/ site operator trained</b>	31	FDEP Class Flyers & Sign-in Sheets, Applied Polymer Class Sign-in Sheet	DNR, Pellicer, Simmons, Aliucci	

**SECTION VII. STORMWATER MANAGEMENT PROGRAM (SWMP) SUMMARY TABLE**

A.	B.	C.	D.	E.	F.
Permit Citation/SWMP Element	Permit Requirement/Quantifiable SWMP Activity	Number of Activities Performed	Documentation/Record	Entity Performing the Activity	Comments
	<b>Municipal construction site plan reviewers trained</b>	0			No new municipal reviewers
	Continue to implement the procedures to notify building permit applicants of their potential application responsibilities under the Department's NPDES generic permit for stormwater discharge from construction activities (Rule 62-621.300(4), F.A.C.).				
	<b>Number of development orders applicants notified</b>	35	Lee County Development Review Services Report, Development Review Applications Received	Lee County Development Services	
	Provide a description of the notification procedures for building permit applicants required above, and include any supporting materials, in the Year 1 ANNUAL REPORT. <b>(Year 1 Only: Attach description of procedures and supporting material)</b>				

**SECTION VIII. CHANGES TO THE STORMWATER MANAGEMENT PROGRAM (SWMP) ACTIVITIES (Not Applicable In Year 4)**

A.	Permit Citation/SWMP Element	Proposed Changes to the Stormwater Management Program Activities Established as Specific Requirements Under Part III.A of the Permit (Including the Rationale for the Change) — REQUIRES DEP APPROVAL PRIOR TO CHANGE IF PROPOSING TO REPLACE OR DELETE AN ACTIVITY.
B.	Permit Citation/SWMP Element	Changes to the Stormwater Management Program Activities NOT Established as Specific Requirements Under Part III.A of the Permit (Including the Rationale for the Change)

# **ATTACHMENTS**

## **TABLE OF CONTENTS**

Water Quality and Monitoring Data Summary	Page 2/27
Capital Improvement Project Status	Page 7/27

# **Monitoring Data Summary**

**Water Quality Assessment**

**For**

**Lee County NPDES Permit FLS000035**

**Permit Year 6**

**2009-2010**

**.**

# Lee County Monitoring Data Summary

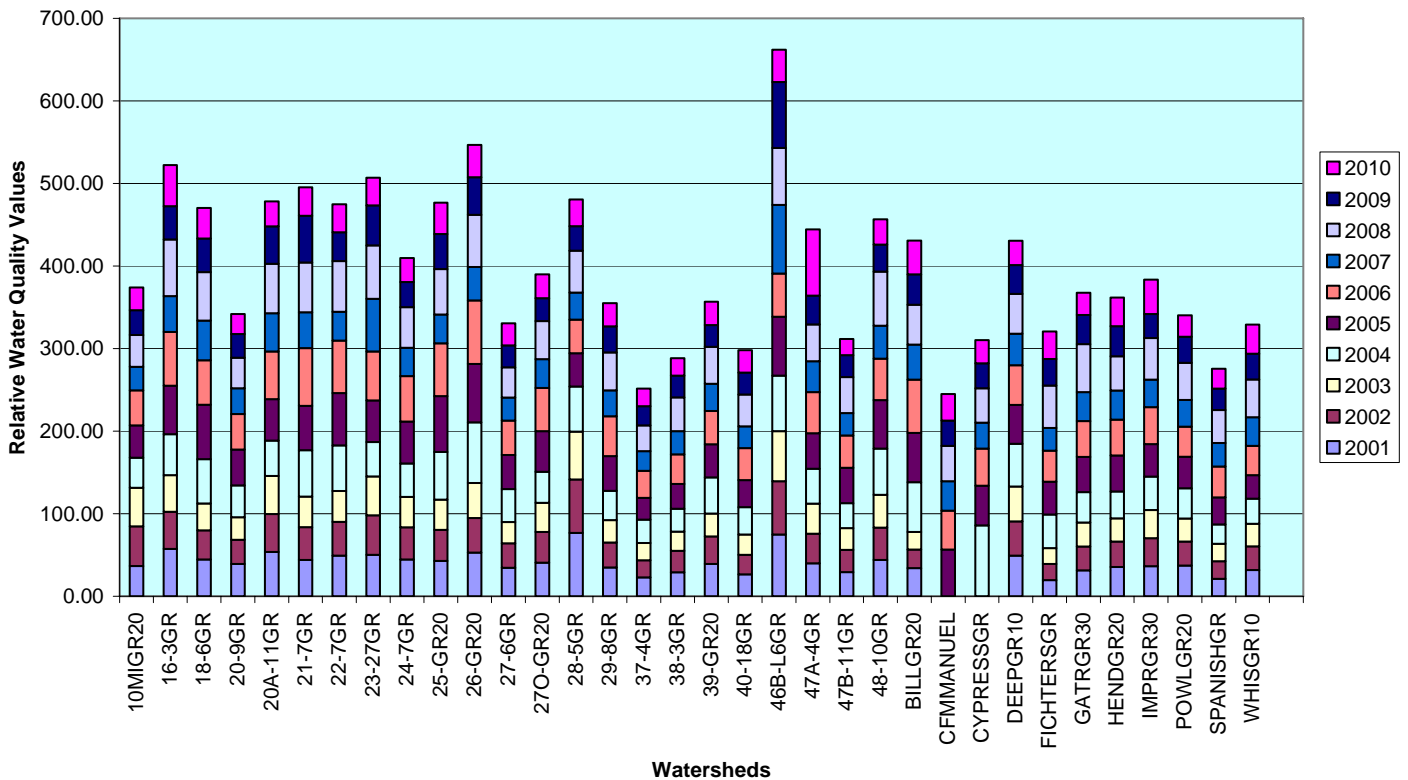
## Water Quality Assessment

**2009-2010**

There are several mechanisms to evaluate water quality. One of the more popular methods includes modeling land use runoff with rainfall. This discussion centers around components of the Water Quality Index (WQI) such as nutrients, oxygen demanding compounds, water clarity, dissolved oxygen. In the following discussion, we use ambient data collected within Lee County to generate estimated loading and normalized concentration values for the monitored Lee County watersheds.

The annual Relative Water Quality Values for each monitored watershed were plotted in Table I. This clearly identifies watersheds where water quality may be improved. In the case of 47A-4GR, it is the outfall of an older subdivision with need of retrofits and is served by septic systems. This assessment method assists in prioritizing watershed retrofit actions using the data at hand.

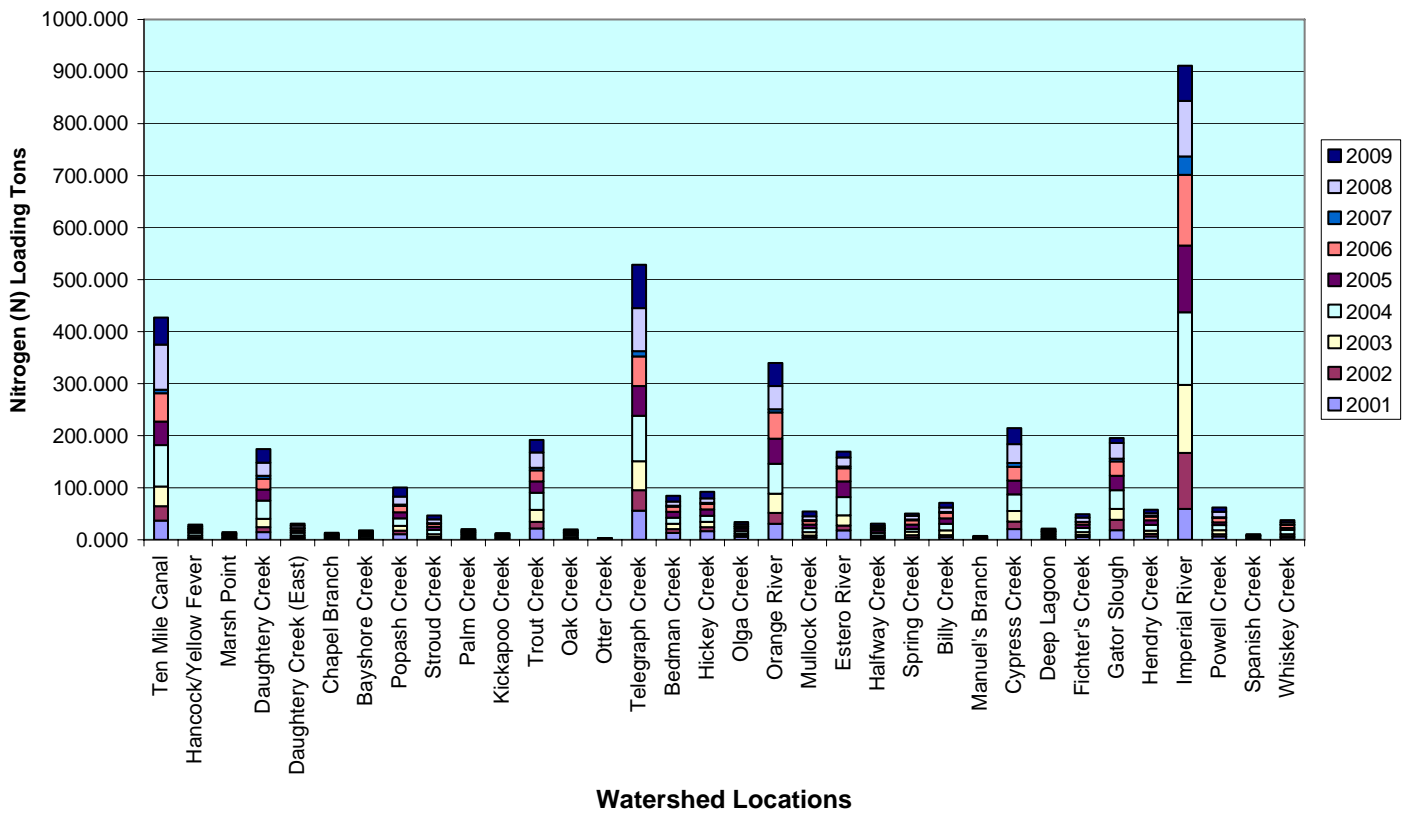
**Lee County Relative Water Quality Values  
by  
Sample Location from 2001 thru 2010**



**TABLE I**

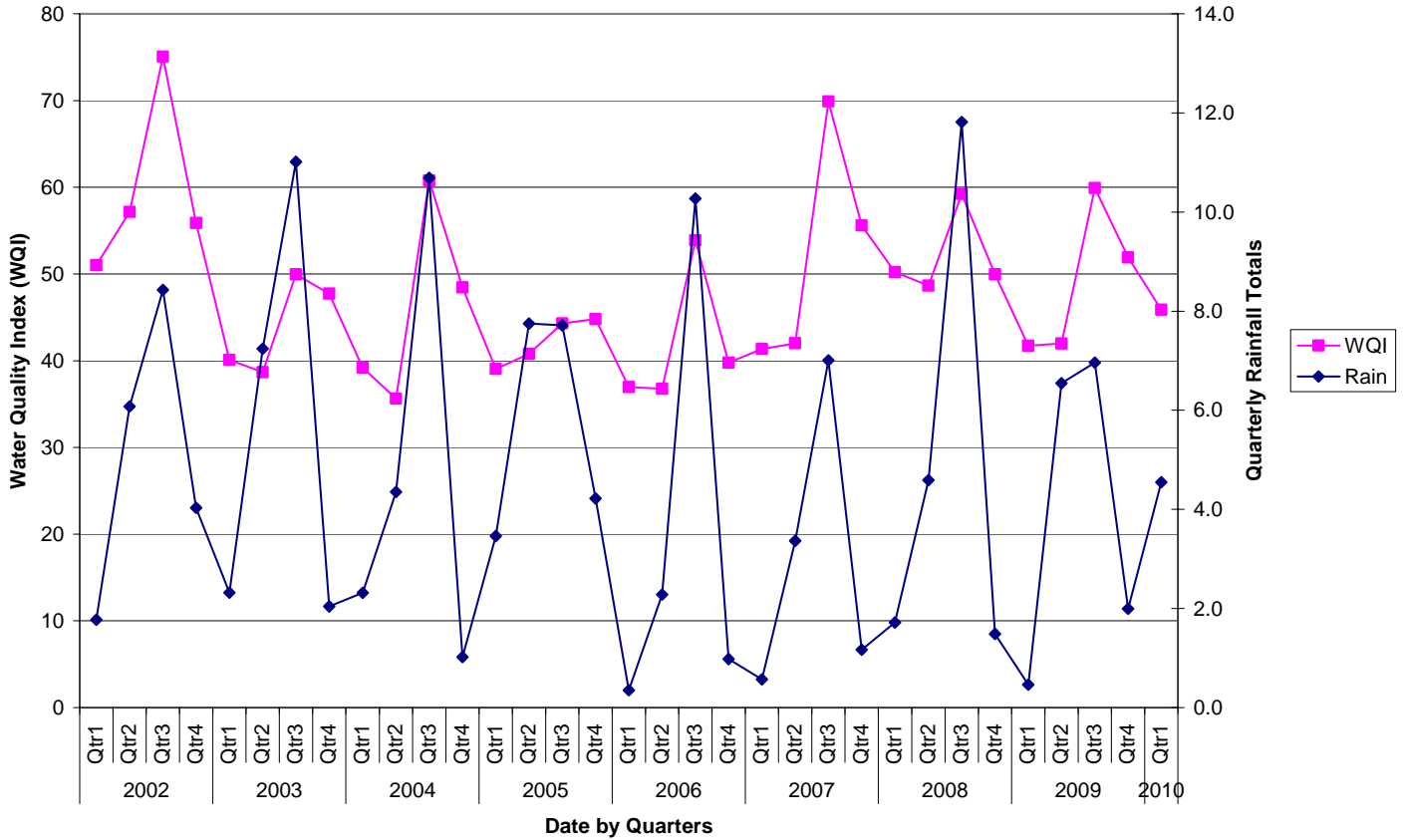
In Table II, the annual loading from local data for Total Nitrogen by watershed is plotted. The watersheds with the greatest impact on the receiving waters over the period of the permit are easily ascertained visually. This assists decision makers with prioritization of watersheds where improvements are to be made. Combining the two assessment methods (concentration and loading) provides decision makers two views of water quality impacts. The selected evaluation process balances watershed size and water quality. This provides a means of targeting and prioritizing watersheds for target parameters and assessing where specific BMPs would have the greatest impact.

**Cumulative Annual Nitrogen Loading  
by Watershed**



**TABLE II**

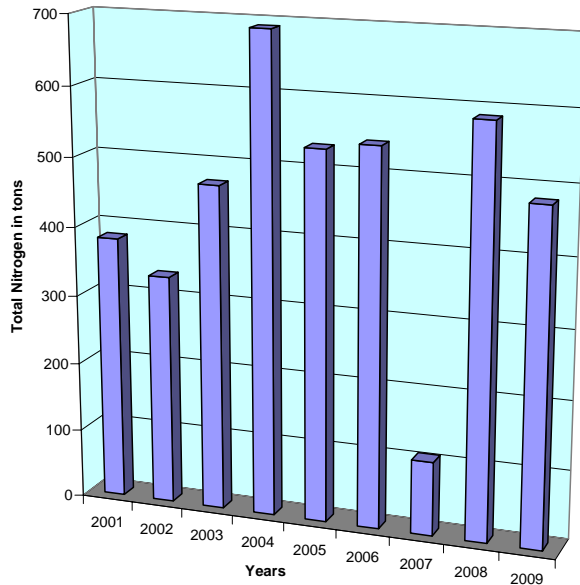
### Quarterly Rainfall and WQI In Lee County



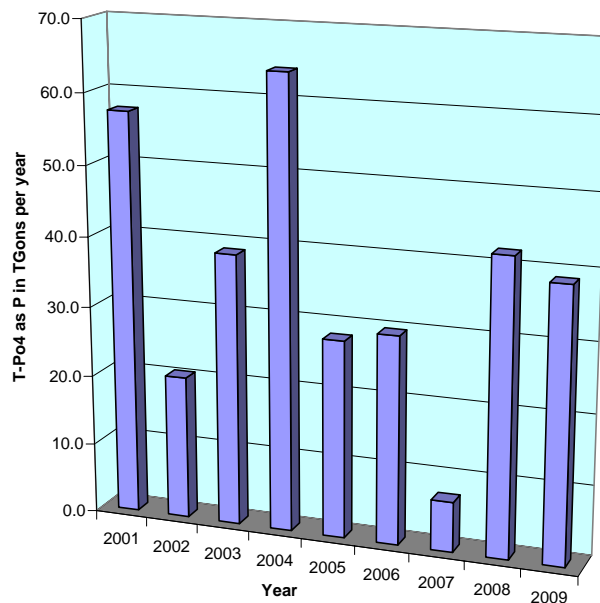
## CHART 1

The relationship between water quality and rainfall is shown in Chart 1. The WQI is a relative normalized quality value as compared to Table 2-5 first used in the State of Florida 1988 305b report for sites throughout the state. Rainfall is taken from average rainfall using Lee County rainfall data. The correlation between rainfall and water quality is demonstrated graphically in Chart 1.

### Lee County Watersheds Calculated TN Loading in Tons\_N/Year



### Lee County Watershed Calculated T-PO4 Loading in Tons\_P/Year



The charts above illustrate how the TN and TP loading vary with rainfall. The rain patterns in 2007 spanned the 4<sup>th</sup> quarter of 2006 to the first quarter of 2008 with a relatively high 3<sup>rd</sup> quarter rain total. The cumulative effect of low rainfall during the period resulted in low loading for both TN and TP.

**Lee County**  
**Capital Improvement Project**

